

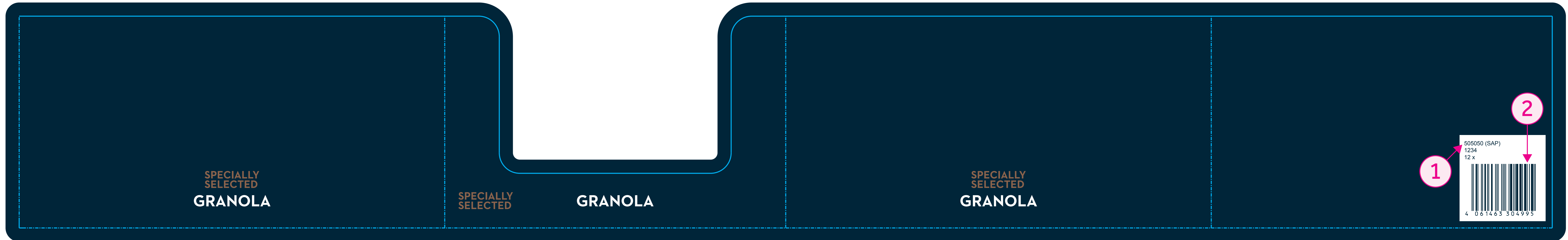


# ORDER GTIN BARCODES

SRP (Display Cases)  
Positional Style Guide

**Version 1 • May 2022**

# SRPS (DISPLAY CASES) WITH ORDER GTINS PRINTED DIRECTLY



1

SRPs (Display Cases) with Order GTINs printed directly.

Include the GTIN 13 and all other required text in one single white box to the bottom right on the back side.

The SAP text is in ARIAL at 12pt and is set in the darkest colour on the artwork.

Both the box and text can be reduced to fit however ensure the text is still readable and printable.

If the darkest colour is in doubt an additional colour of process black will be used and added to the artwork.

The information as briefed will be:  
 1st line SAP number  
 2nd line CBis ID number  
 3rd line Quantity per case

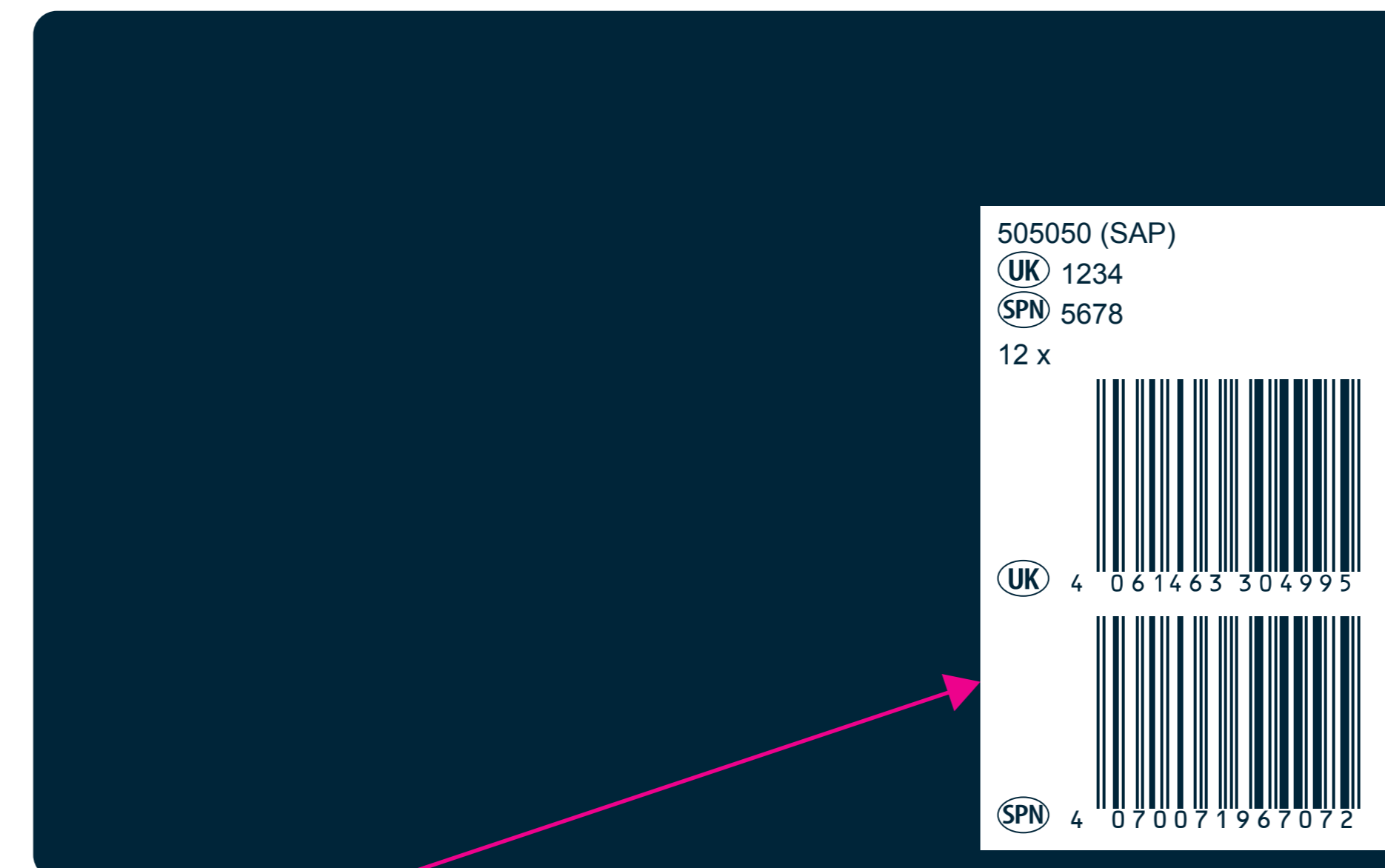
2

The Order GTIN is a GTIN13 code. For Flexographic printing we recommend a magnification factor of 150%, however this can be reduced to 100% if necessary.

**The Aldi Order GTIN Barcode will need to be checked by Aldi/Supplier/Printer to ensure it scans correctly.**

The code is to be coloured in the darkest colour on the artwork. If the darkest colour is in doubt an additional colour of process black will be used and added to the artwork.

## MULTIPLE COUNTRY LAYOUT



3

## OR FOR NARROW HEIGHT SRPS



3

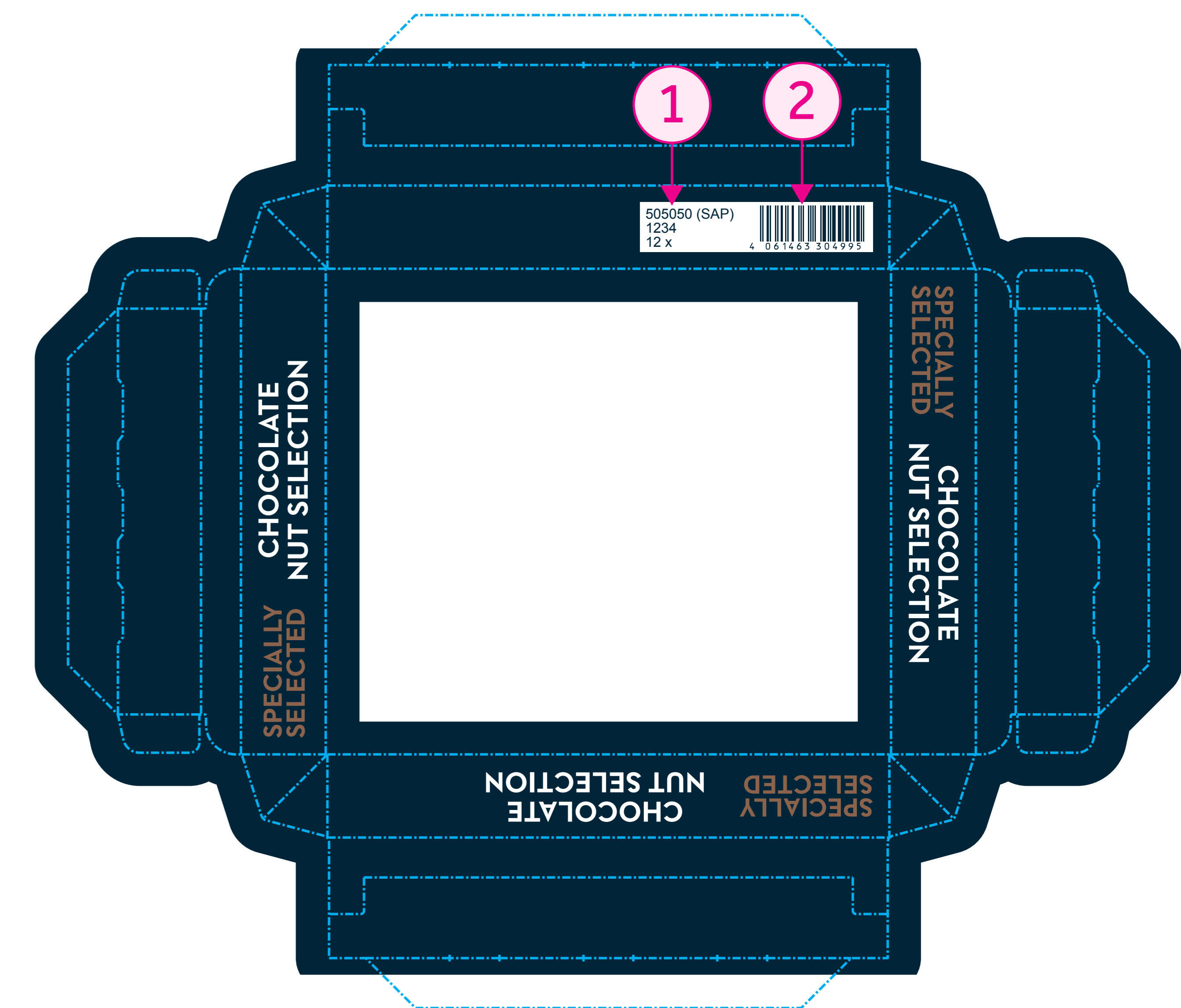
Where a product is sold in more than one country multiple Aldi Order GTIN Barcodes and SAP text within a white identifier box will be required.

Each code and CBis ID number will need to be identified with a country abbreviation ellipse as the below examples. This is printed in the darkest colour on the artwork.

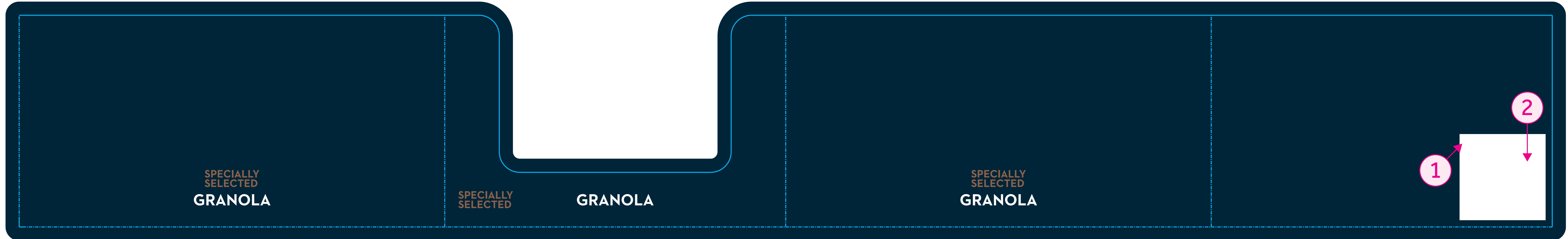
The layout and specifications follow the single country version (points 1 and 2).

**UK IE SPN GER**

## SMALLER SRP SIZES/TRAYS



# SRPS (DISPLAY CASES) WITH ORDER GTINS ADDED SEPARATELY



1

SRPs (Display Cases) with Order GTINs added separately.

Include the GTIN 13 and all other required text in one single white box to the bottom right on the back side.

The SAP text is in ARIAL at 12pt and is set in black. Both the box and text can be reduced to fit however ensure the text and codes are still readable.

The information as briefed will be:  
 1st line SAP number  
 2nd line CBis ID number  
 3rd line Quantity per case

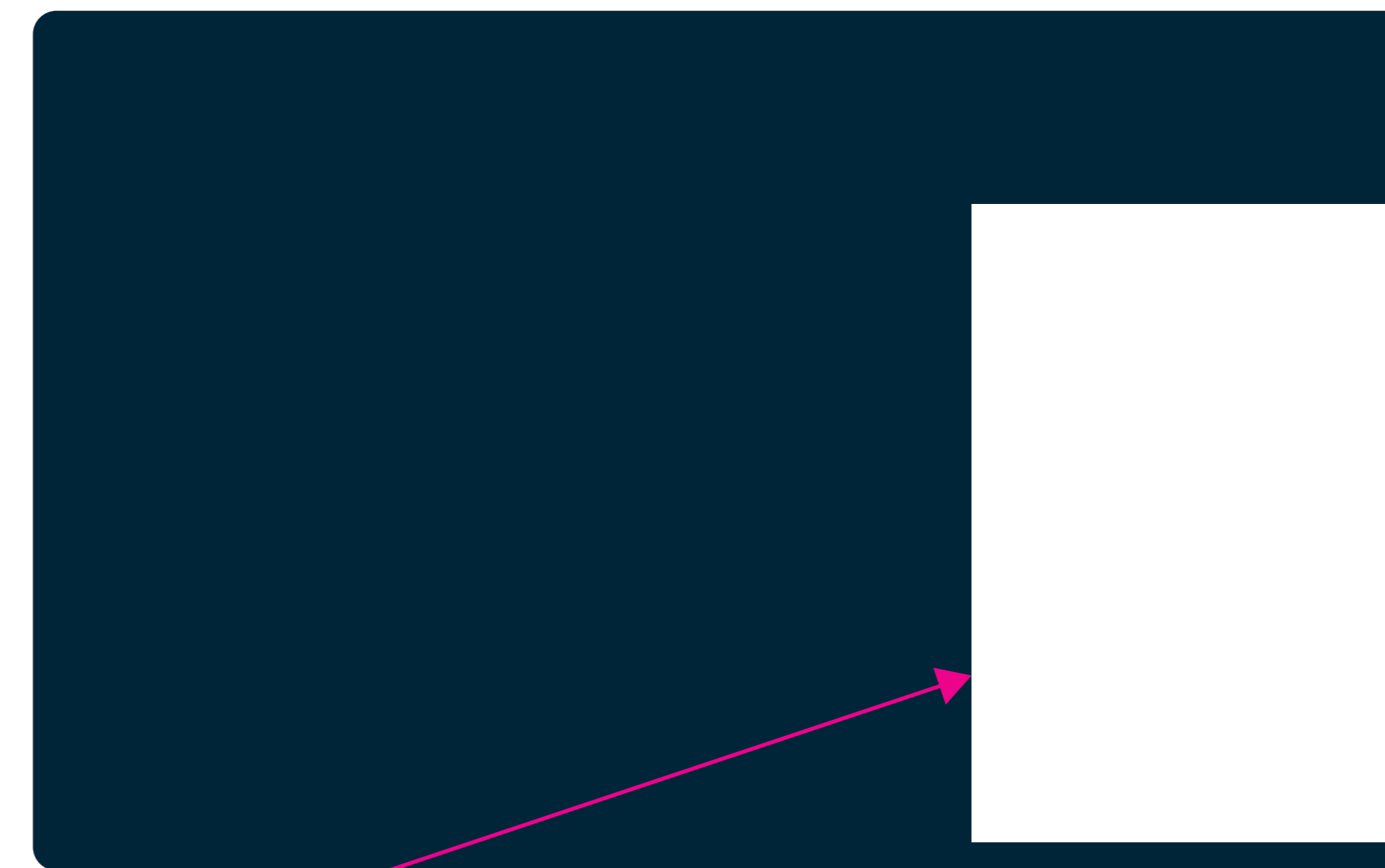
2

The Order GTIN is a GTIN13 code. For Flexographic printing we recommend a magnification factor of 150%, however this can be reduced to 100% if necessary.

**The Aldi Order GTIN Barcode will need to be checked by Aldi/Supplier/Printer to ensure it scans correctly.**

The code is to be coloured in the darkest colour on the artwork. If the darkest colour is in doubt an additional colour of process black will be used and added to the artwork.

## MULTIPLE COUNTRY LAYOUT



3

## OR FOR NARROW HEIGHT SRPS



3

Where a product is sold in more than one country multiple Aldi Order GTIN Barcodes and SAP text within a white identifier box will be required.

Each code and CBis ID number will need to be identified with a country abbreviation ellipse as the below examples. This is printed in the darkest colour on the artwork.

The layout and specifications follow the single country version (points 1 and 2).

**UK IE SPN GER**

## SMALLER SRP SIZES/TRAYS

